

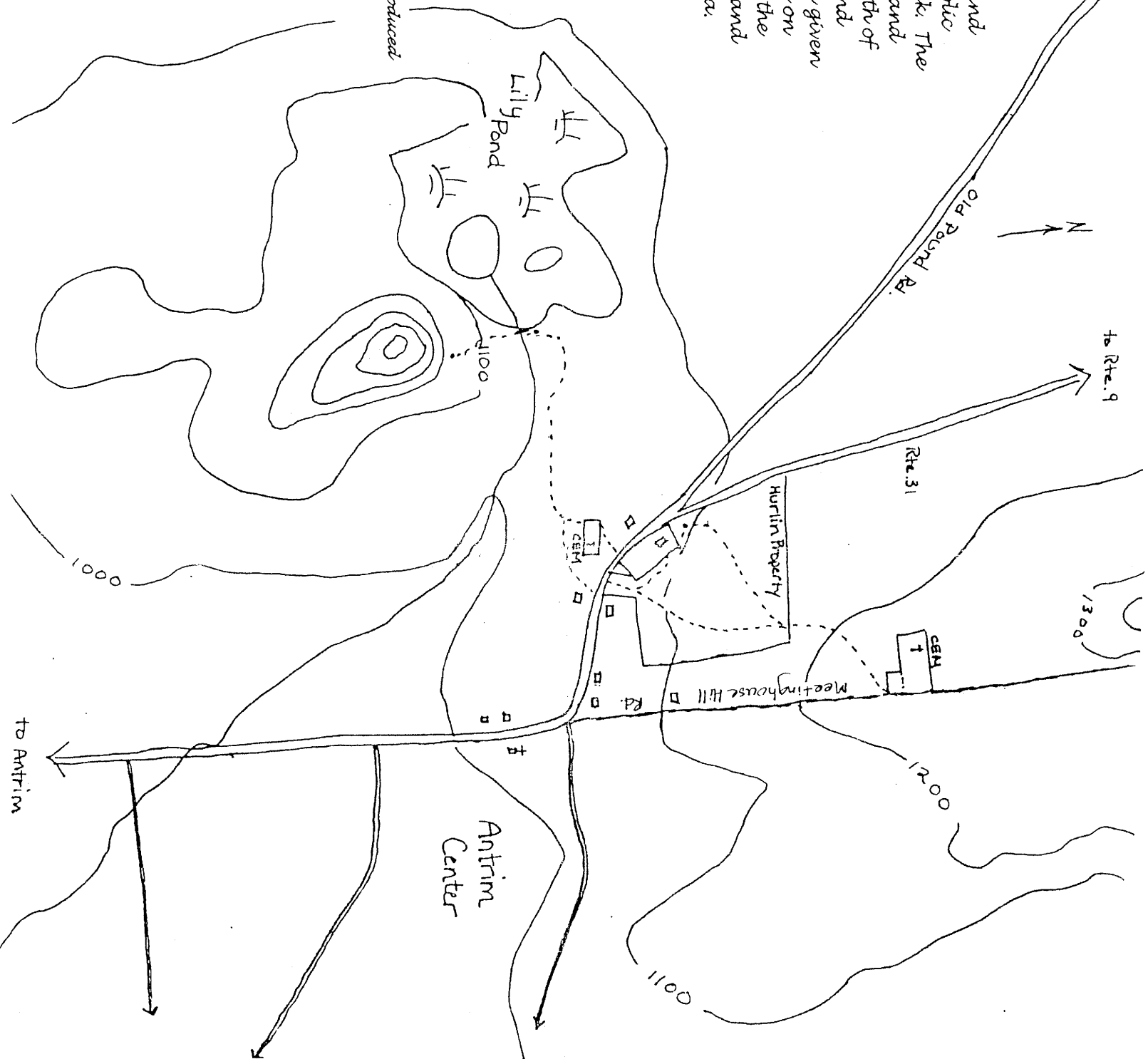
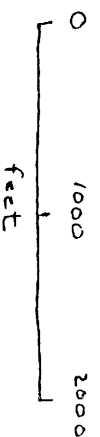
Welcome!

The Hurlin Recreation Area and neighboring land is open to the public from dawn to dusk seven days a week. The Lily Pond land is owned by Maggie and Don Chambers. The land to the north of the Hurlin Area is owned by Jane and Peter Lamb. These landowners have given permission for walking on the trails on their land. Please be considerate of the Chamber's and the Lamb's property and other neighbors when using the area.

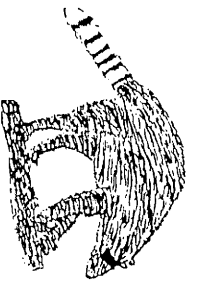
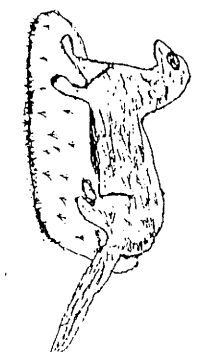
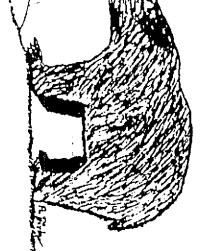
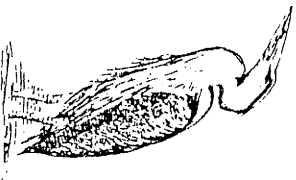


©The text and artwork of this guide were produced by students and teachers of the Building Community Class at Great Brook Middle School, Antrim, NH. Our thanks to Ruth Benedict. First printed, May 2000

Scale

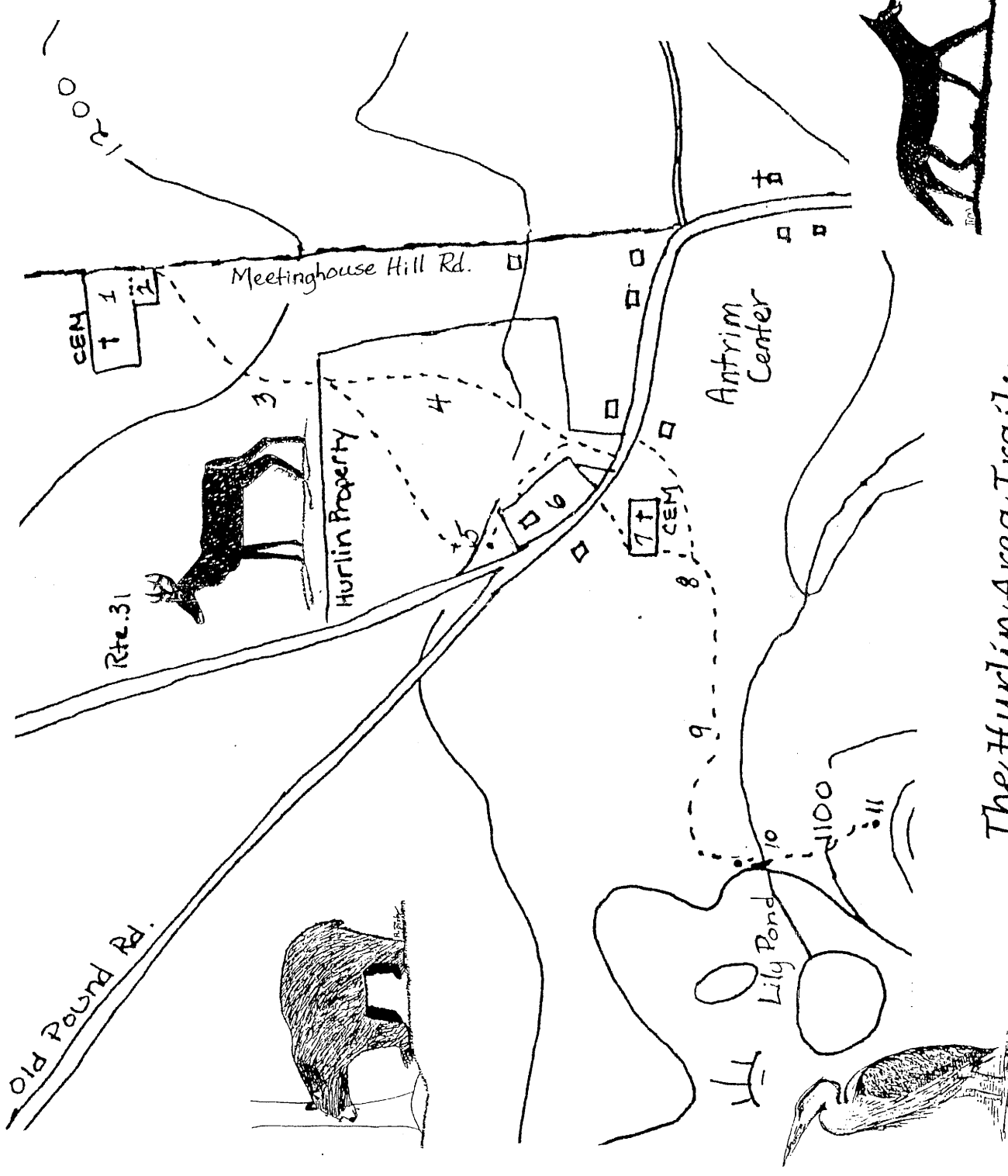


HURLIN RECREATION AREA TRAIL MAP & GUIDE



Points of Interest

- 1 Meeting House Marker - The meeting house marker is a rock with a plaque on it telling about the first meeting house in Antrim.
- 2 Meeting House Cemetery - This cemetery is the oldest one in Antrim.
- 3 Mother of all Beeches - This is the largest beech tree in the Hurlin Area. The smaller trees growing in this area come from "shoots" sent up from the roots of the "mother."
- 4 Meadow - The meadow is located in the middle of the Hurlin Land. The Meadow was once used for farming.
- 5 Borrowing Pit - The borrowing pit once served as a gravel pit open to anyone in the town of Antrim.
- 6 Old Ziegler Property - This is a picnic area that was possibly the foundation of a barn. The well here may have been inside the barn.
- 7 Antrim Center Cemetery - This is the second oldest cemetery in Antrim. The monument range in dates from the early 1800s to the late 1800s.
- 8 Vernal Pools are pools of water that only appear in the spring when the ground is still frozen and the snow has melted and run into the pools. A vernal pool is defined by having no inflow and no outflow.
- 9 Glacial Erratics - The glacial erratics are large boulders that were moved here by the glaciers about 10,000 years ago.
- 10 Lilly Pond Beaver Dam - The beaver dam serves as a walkway to the other side of the beaver dam. What did the beavers use as the foundation of this dam?
- 11 Lilly Pond Ledges - The Lilly pond Ledges were probably made during the last glacial period. These ledges are home to many porcupines. A clear view of the bog and pond can be had from the top of the ledges.



The Hurlin Area Trails

The Hurlin Recreation Area was originally donated to the Town of Antrim by David Hurlin in the name of his daughter Lucy Hurlin. The first attempt to establish a trail system in the area was in the late 1970's. In 1999 the Antrim Conservation Committee the Building Communities Class at Great Brook Middle School to develop trails to be used for recreation. The students and teachers gladly accepted the challenge because they believed in helping the community.

During the 1999-2000 school year students mapped the area, completed a wildlife inventory and designed and built the trails. The trails were open to the public in May of 2000.

The idea of the Building Communities Class was for sixth and seventh grade students to be involved with projects in communities surrounding the school. Examples of other projects are creating a business, a sell hot dogs at basketball games, a production of *The Tempest* by William Shakespeare, rebuilding a low ropes course destroyed by a tornado in 1997, and completing a feasibility study for an amphitheater at the school. The teachers responsible for Building Communities Class are Letitia Rice, Kathleen Bigford and Beth Frost.

Look for These Animals

- Porcupines** - Signs of porcupines have been found at the ledges. Lots of feces have been left there, inside the caves and around the ledges. These porcupines live at the ledges and inside the caves there.
- Bears** - There are bears at Antrim Center. Sightings have been reported, as well as other signs. These bears are most likely black bears and are about five feet tall. If you see one, don't panic, just leave any food you have there, and walk backwards slowly.
- Deer** - You will find scat and markings on trees from deer. Be careful and quiet and maybe you'll see one!
- Moose** - Moose are the largest members of the deer family, and can stand up to seven and a half feet! Moose scat and footprints have been seen all over the Hurlin and Lily Pond land.
- Red Fox** - In the winter prints of red fox can be found all over this area.
- Hérons** - A blue heron rookery has been found in the Lily Pond. A rookery is a group of nests. Also, sightings of the birds have been reported!
- Beaver** - In the Lily Pond there are beaver lodges. On the eastern side of the pond there is a long beaver dam. At this time the dam and lodges are well maintained. The dam is also the bridge to the ledges, so, when you are walking on it, be careful and look for beaver signs!

