

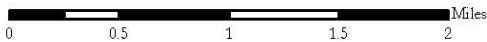
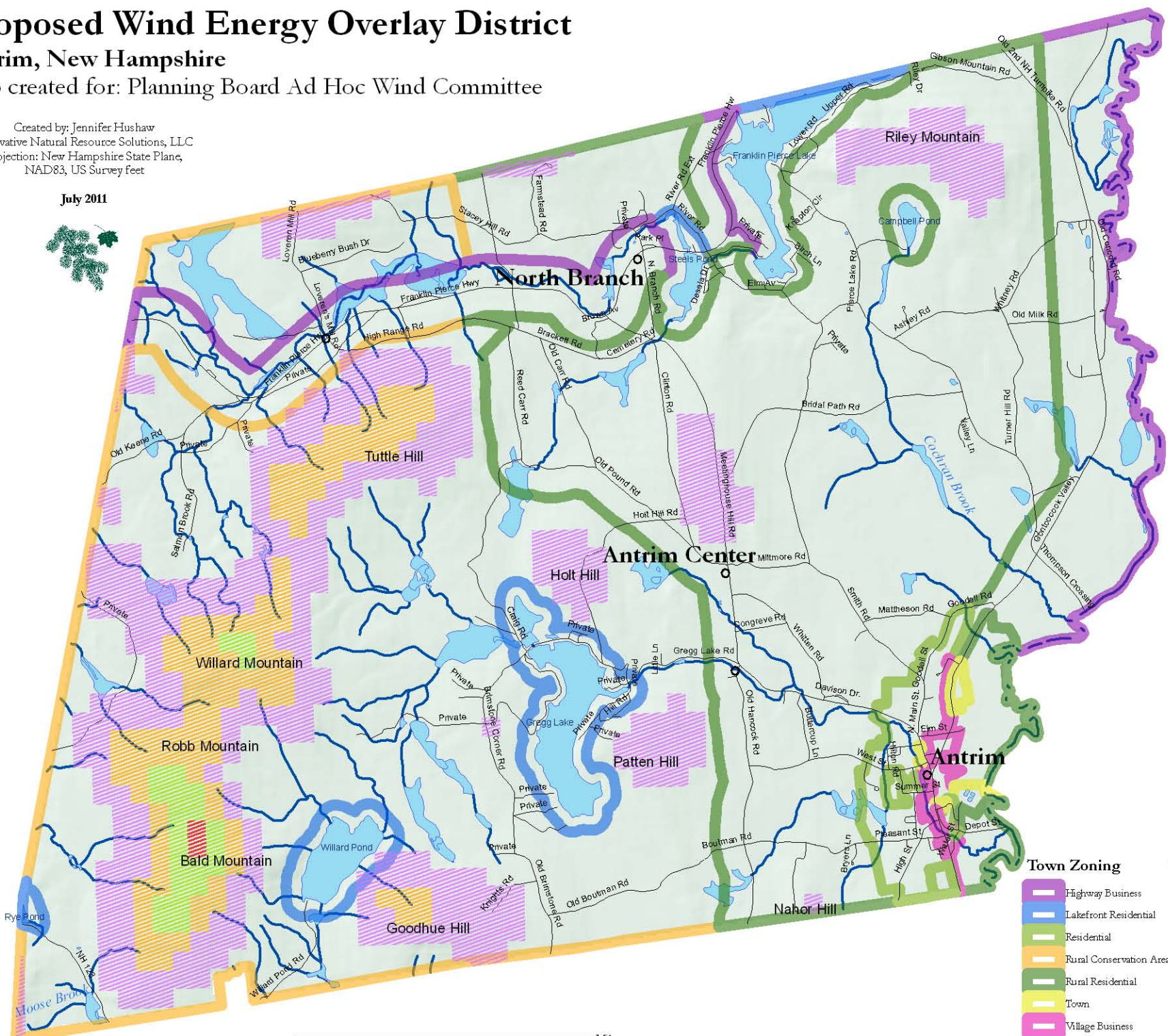
Proposed Wind Energy Overlay District

Antrim, New Hampshire

Map created for: Planning Board Ad Hoc Wind Committee

Created by: Jennifer Hushaw
 Innovative Natural Resource Solutions, LLC
 Projection: New Hampshire State Plane,
 NAD83, US Survey feet

July 2011



Legend

- Public Roads
- Lakes and Streams

Town Zoning

- Highway Business
- Lakefront Residential
- Residential
- Rural Conservation Area
- Rural Residential
- Town
- Village Business

NREL Wind Power Class

- 1- Poor
- 2- Marginal
- 3- Fair
- 4- Good
- 5- Excellent
- 6- Outstanding
- 7- Superb