

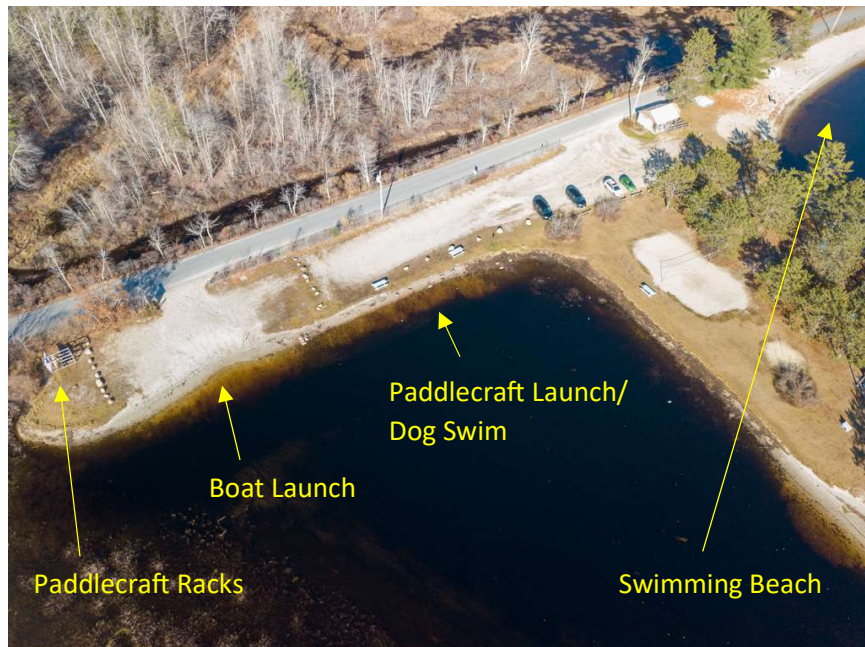
**Gregg Lake Public Boat Launch Improvement
Town of Antrim Municipal Boat Launch
220 Gregg Lake Road
Antrim, NH**

Introduction. In the late 1960s, the Town of Antrim constructed a boat launch as part of a new public beach park on Gregg Lake, a 200-acre dam-enhanced natural lake in the Monadnock Region. The boat launch and beach are located entirely on town-owned land along the north shore of Gregg Lake, with access from Gregg Lake Road. Since a federal grant from the Land and Water Conservation Fund was originally used to develop the beach park and boat launch, the boat launch has always been open for public use, and is popular among fishers, recreational boaters and paddlers.



Location of the Gregg Lake Public Boat Launch, 220 Gregg Lake Road, Antrim, NH

The Gregg Lake boat launch consists of a gentle sandy-gravel slope extending 54 feet from Gregg Lake Road to the shoreline at the high-water level and dropping less than 3 feet in elevation, with parking for three vehicles with trailers on each side and two paddlecraft racks on the west side. An adjacent area to the east is designated for launching paddlecraft, mooring sailboats and dog swimming. The paddlecraft racks provide seasonal storage at the boat launch for a nominal fee and are heavily used.



Aerial view of the western end of Gregg Lake Beach Park.

Erosion has caused the shoreline at the boat launch to recede over the approximately fifty-five years it has been in use, and boats powering-on to trailers in the shallow waters stir up bottom sediments and dig holes that create hazards for vehicles backing into the water. In October 2022, the Town of Antrim was awarded a grant from the Land and Water Conservation Fund for improvements at Gregg Lake Beach Park, which include constructing a new bathhouse, improving accessibility and landscaping for erosion control at the swimming beach, picnic area and parking lot. In this application, the Town of Antrim seeks funding for renovations at the public boat launch on Gregg Lake for the purposes of improving access for both motorboats and paddlecraft and controlling erosion due to stormwater runoff and launching motorboats.



Gregg Lake Public Boat Launch at Low Water

Boat Launch Design Considerations

The goal of the Gregg Lake Public Boat Launch improvement project is to stabilize the boat launch area to prevent further erosion of the ramp and parking area and deposition of sediment in the lake using best management practices that make it easier for recreational users to safely access the lake, while blending in with the park's rural natural habitat. The boat ramp will be constructed of flexible plantable concrete mats, such as Drivable Grass, with gravel infill starting at the road and reaching approximately 54 feet to the high water line. For the parking areas and ramp edges, the flexible plantable concrete mats, which allow for water infiltration and root penetration while also providing a solid surface for vehicles to drive on will also be used, but planted with grasses and short native plants that can handle some traffic. Bases will be prepared under the paving materials as required to allow maximum stormwater infiltration, and grading will direct stormwater away from the boat ramp. Raised berms will be installed with native vegetation along the lakeshore on both sides of the ramp to limit further erosion, and the areas around the existing kayak/paddlecraft racks will be revegetated. Stormwater runoff from the road will be directed to a rain garden/retention basin in the northeast corner of the boat launch area. The existing kiosk will be replaced and will include educational materials explaining the use of best management practices to protect the lake.

Specific Elements

Stabilization of ramp and parking areas:

- Central ramp from Gregg Lake Road to shoreline at high water mark, 12' w x 54' l (648 ft²) — plantable concrete mat with gravel infill
- 3 Parking spaces for vehicles with trailers on east side, 30' w x 60' l (total 1800 ft²) — plantable concrete mat with vegetative infill
- 3 Parking spaces for vehicles with trailers on west side, 30' w x 45' l (total 1350 ft²) — plantable concrete mat with vegetative infill

- Stabilization at road edge, 2 x 8' x 15' (240 ft²) — plantable concrete mat with vegetative infill
- Portable toilet pad between ramp and rain garden, 6' x 4' (24 ft²) — plantable concrete mat with vegetative infill
- Raised berms between parking spaces and shoreline at both sides of ramp, approximately 5' wide x 60' long x 8" high at lake edge, vegetated with native plants and trees
- Rain garden/retention basin at NE corner of launch area, 45' x 5', vegetated with native plants
- Kiosk

Estimated Budget

Design	5,000
Permitting	10,000
Engineering	5,000
Base Prep Materials	20,000
Base Prep Labor	10,000
Plantable Pavers Materials	20,000
Plantable Pavers Labor	20,000
Rain Garden Construction	3,000
Landscaping/Erosion Control	6,000
Kiosk	1,000
SUM	100,000

Attachments:

1. Boat Launch Plan (Drew Aquilina, SLR)
2. Soil Retention quote for Drivable Grass
3. Authorization of Town Administrator, with email contact
4. Documentation to assure access to general public (resident and non-resident)
5. Documentation to assure facility will be maintained
6. Property Survey